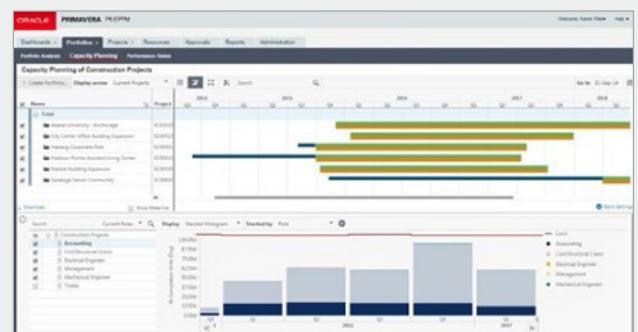


Oracle Primavera P6 Enterprise Project Portfolio Management (EPPM)

Oracle Primavera P6 EPPM is the flagship product for globally prioritising, planning, managing and executing projects, programmes and portfolios, always ensuring that the decision-making process is transparent and based on up-to-date and trustworthy data to keep projects firmly on track. P6 is the recognised standard for high-performance project management software, designed to handle large-scale, highly sophisticated and multifaceted projects with ease, allowing you to organise projects with an unlimited number of activities, resources and target plans, displaying up to 100,000 activities at any one time in the plan. P6 EPPM can be hosted on the Oracle cloud or other non-Oracle hosted platforms, or implemented as an on-premise tool.

Overview

P6 EPPM is a comprehensive, multi-project planning and project control software solution, built on Oracle and Microsoft SQL Server Enterprise relational databases for enterprise-wide project management scalability, enabling your organisation to store and manage its projects in a central location using a client server. With all the industry-leading functionality of Primavera P6 PPM, EPPM goes one step further with the added benefits of in-application dashboard reporting and the ability to manage your projects in specific portfolios.



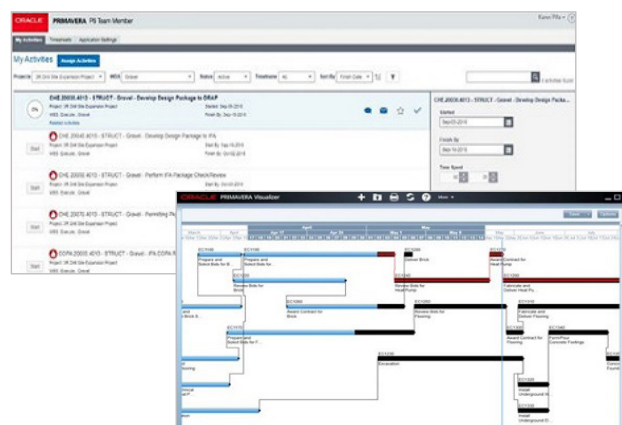
P6 EPPM enables you to budget, prioritise, plan, administer and manage multiple projects within one enterprise; optimize limited and shared resources; and control changes to the project plan. The tool supports work breakdown structures (WBS), organizational breakdown structures (OBS), user-defined fields and codes, critical-path-method (CPM) scheduling, and resource levelling. It provides customisable interfaces, scalable and flexible tools, and easy integration with project management software outside of the P6 suite, including Oracle

Contractor, Microsoft Project, and Microsoft Excel. For enhanced reporting, P6 EPPM has an out-of-the-box connection with Oracle BI Publisher.

Team Member is an additional component which uses mobile interfaces such as phones or tablets to provide a quick, convenient and easy way to update project status.

Features

- Flexible and customisable user interface
- Streamlined enterprise reporting
- Integrated risk management
- Resource management and optimization views
- Risk management
- Advanced scheduling solutions
- Critical path schedule planning
- Budgeting and budget tracking
- Team member interfaces for gathering status updates
- Dashboard reporting
- Out-of-the-box connection with Oracle BI Publisher for enhanced reporting
- Requires stable and wired internet connection for optimal performance



Benefits

- Fully customisable for a bespoke solution
- Plan, schedule and control large-scale complex programmes or individual projects throughout their entire lifecycle
- Manage project portfolios
- Increased visibility of activity and progress
- Confident management of project risks
- Perform resource and cost management, balancing resources, allocating them efficiently and tracking progress
- Track and evaluate planned vs actual costs
- Analyse project performance
- Advanced and customisable reports allow for improved collaboration and decision making
- Dashboard reporting enables you to create visual reports, graphs and tables to demonstrate project status at any level
- Easy integration with project management software outside of the P6 suite, including Oracle Contractor, Microsoft Project, and Microsoft Excel helps to foster team collaboration
- Integration with financial management and human capital management systems
- Cloud-hosted solution takes the configuration and maintenance out of the equation, offering minimal IT set-up costs and an RPCuk support package