



Stay in control by starting in control

Joseph Lee
EUNA PPCM Practice Lead, Mott MacDonald

7 October 2022

Stay in control by starting in control

Introduction

Control?

- **to exercise restraining or directing influence over**
- **the act of limiting or managing something**
- **the power to influence or direct people's behaviour or the course of events**
- **determine the behaviour or supervise the running of**

Stay in control by starting in control

Introduction

“If you want to make God laugh, show him your plans”

Stay in control by starting in control

Introduction

“If you want to make God laugh, show him your plans, or schedules, or risk registers or best of all your cost estimates!”

Stay in control by starting in control

Introduction

“If you want to make God laugh, tell him its under control!”



Stay in control by starting in control

Is control a flawed concept?

The fallacy of misplaced concreteness

Whitehead, A.N. (1929) “Process and reality”

Stay in control by starting in control

Is control a flawed concept?

“There are no whole truths; all truths are half-truths”

Whitehead, A.N.

Stay in control by starting in control

Is control a flawed concept?

“If there were only one truth, you couldn’t paint a hundred canvases on the same theme”

Pablo Picasso

Stay in control by starting in control

Is control a flawed concept?

Everything in the world can be reduced to a two-by-two matrix.

Known	Known knowns	Known unknowns
Unknown	Unknown knowns	Unknown unknowns
	Knowns	Unknowns

Stay in control by starting in control

Is control a flawed concept?



Stay in control by starting in control

Is control a flawed concept?



Stay in control by starting in control

Is control a flawed concept?



Stay in control by starting in control

Is control a flawed concept?



Stay in control by starting in control

Is control a flawed concept?



Stay in control by starting in control

Is control a flawed concept?

Human (noun) - a man, woman, or child:

Human (adjective) - having the qualities, faults, and feelings that people have, as opposed to gods, animals, or machines

Stay in control by starting in control

Introducing the Progenes

Progene (noun) - a man, woman, or child devoid of the qualities, faults, and feelings that people have; assumed to behave more like gods, animals, or machines



Stay in control by starting in control

Introducing the “Projaverse”

“The Projaverse is an amazing place where everything goes better than expected and the normal laws of nature, space, time and the universe should be ignored.”

And PRINCE is therefore useful!



Stay in control by starting in control

Introducing the “Projaverse”



Willing suspension of health and wellbeing



Fudge factors and fairy tales



Compound errors compounding errors



Sweat contingency

Stay in control by starting in control

How do we take back control?

Does project management also suffer from being developed by predominantly MPS engineers who thought alike, had similar background and experiences and thought in the same way?

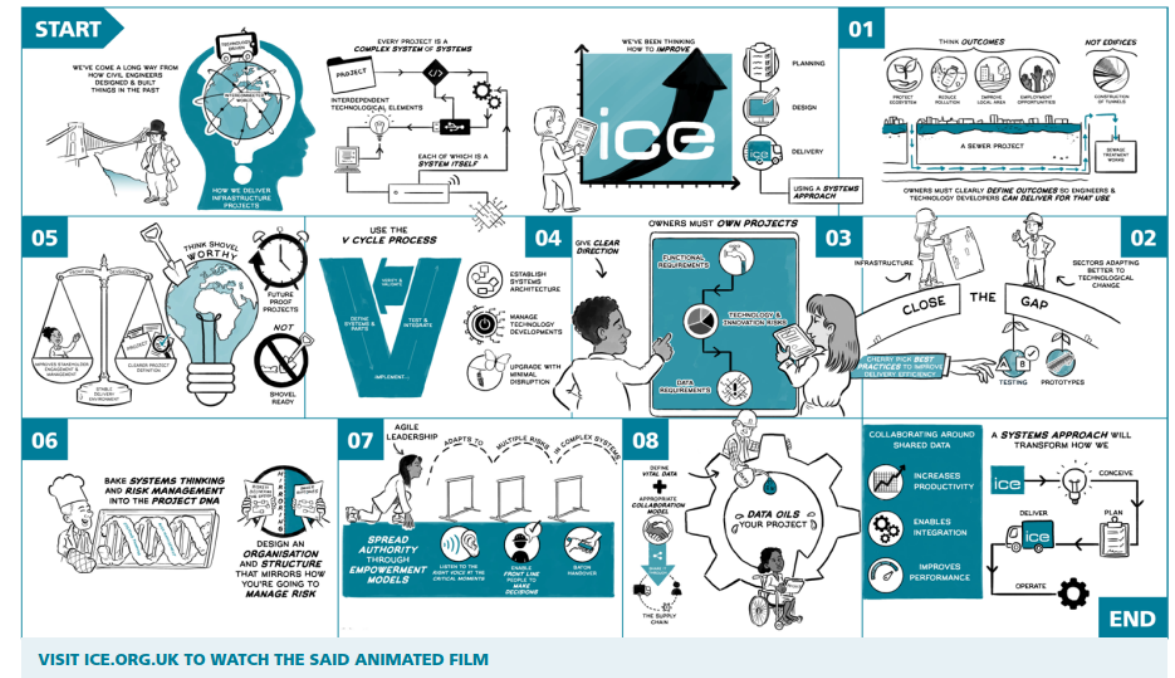


Stay in control by starting in control

How do we take back control?

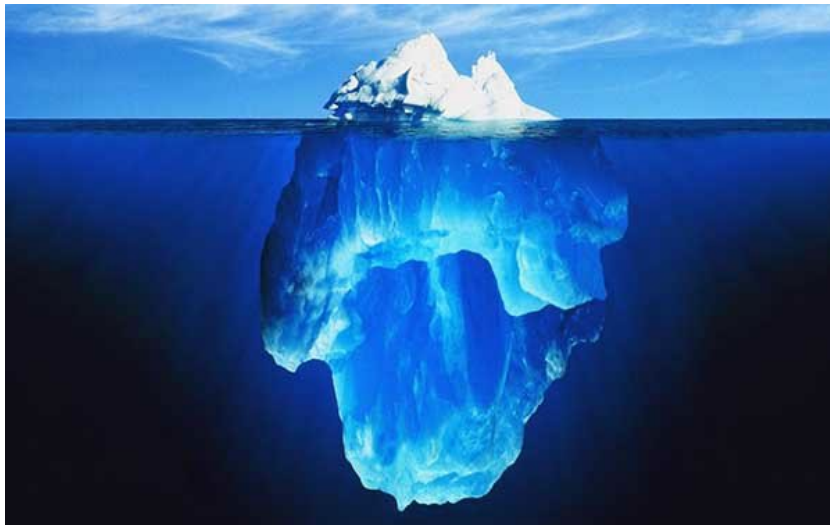
Does project management suffer from its engineering hereditary bias towards absolutes?

Infographic: A Systems Approach to Infrastructure Delivery



Stay in control by starting in control

How do we take back control?



Should we focus less on measuring what can be measured and instead seek to manage the important and unmeasurable?

Stay in control by starting in control

How do we take back control?



Willing suspension of belief



In praise of 85%



What we can't measure might be quite important



Contributory dissent

Stay in control by starting in control

How do we take back control?

"The problem with the world is that the intelligent people are full of doubts, while the stupid ones are full of confidence."

Charles Bukowski 1920-94

Stay in control by starting in control

How do we take back control?

All estimates are wrong, but some can be useful

Paraphrasing George Box (1976)



Thank you

